



120W Industrial Quarter Brick Converters



| Features | Benefits |
|--|------------------------------------|
| • Standard Quarter Brick Footprint | • Assists System Integration |
| • 9-36, 18-36VDC Inputs | • Designed for 28V DC Networks |
| • Up to 91.5% Efficiency | • Easier System Thermal Management |
| • Up to 105°C Baseplate Temperatures | • Suitable for Conduction Cooling |
| • 1,500VDC Isolation (2,250VDC or 3,000VDC option) | • For Rugged Environments |

| Specification | | | | | | | |
|-----------------------------------|-----|---|--------------|--------------|-----------------|--------------|--------------|
| Model | | GQA120 | | | | | |
| Nominal Output Voltage (1) | VDC | 5V | 12V | 15V | 24V | 28V | 48V |
| Input Voltage Range | VDC | 9 - 36V | | | | | 18 - 36V |
| Input Current (Maximum) | A | 17A | | | | | 10A |
| Efficiency (100% load, 24V input) | % | 90% | 89% | 89% | 87% | 89% | 91.5% |
| Output Voltage Adjustment | VDC | 4.5 - 5.5V | 10.8 - 13.2V | 13.5 - 16.5V | 21.6 - 26.4V | 25.2 - 30.8V | 45.6 - 52.8V |
| Ripple & Noise (max) pk-pk | mV | 150mV | 180mV | 200mV | 250mV | 250mV | 300mV |
| Line Regulation (typ) | % | 0.05% | 0.05% | 0.05% | 0.05% | 0.05% | 0.05% |
| Load Regulation (max) | % | 0.03% | 0.03% | 0.03% | 0.03% | 0.03% | 0.03% |
| Overcurrent Protection (typ) | A | 37A | 14.5A | 12A | 6.2A | 5.1A | 4A |
| Overvoltage Protection (typ) | V | 6.5V | 15V | 18V | 32V | 35V | 54V |
| Remote On/Off | - | Yes; Low = ON, Open = OFF | | | | | |
| Remote Sense | - | Yes | | | Not as standard | | |
| Operating Temperature | °C | -40°C to +105°C | | | | | |
| Storage Temperature | °C | -55°C to +125°C | | | | | |
| Temperature regulation | % | 0.5% across full temperature range | | | | | |
| Cooling | - | Conduction, convection or forced air | | | | | |
| Withstand Voltage | VDC | Input to Output 1,500VDC (-NP7 suffix: 2,250VDC, -OP7 suffix: 3,000VDC), Baseplate to Input or Output 1,500VDC. (-NP7 & -OP7 suffix: 2,250VDC) | | | | | |
| Isolation Resistance | MΩ | >10MΩ | | | | | |
| Safety Agency Certifications | - | UL60950-1, CSA60950-1, EN60950-1, CE Mark | | | | | |
| Weight (Typ) | g | 85g (Flanged baseplate, open frame) | | | | | |
| Size (LxWxH) | mm | Flanged version: 60.6 x 49.5 x 12.7 Non-flanged version: 60.6 x 39.5 x 12.7 | | | | | |
| Warranty | yrs | 3 | | | | | |

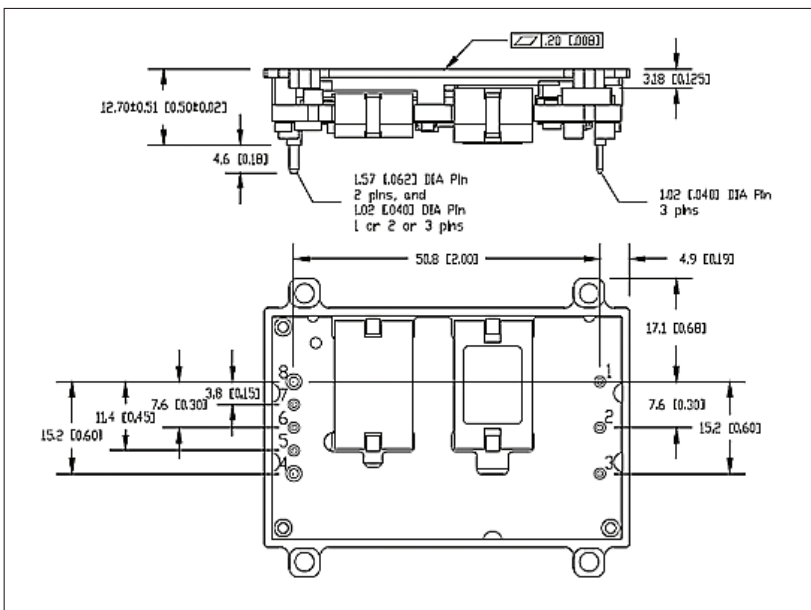
Notes: See Installation Manual for full details, test methods of parameters and application notes

(1) Up to 50V input transient for 1 second

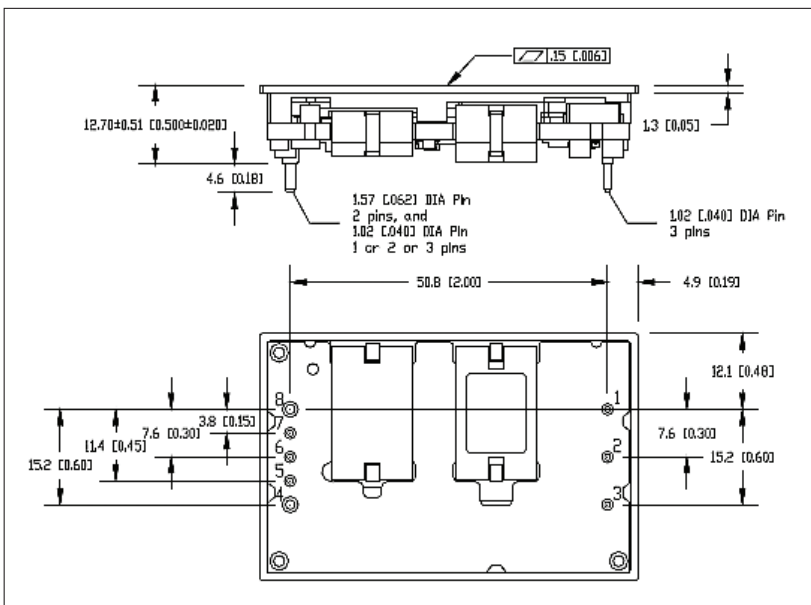
Model Selector

| Model | Input Voltage (V) | Output Voltage (V) | Maximum Current (A) | Maximum Power (W) |
|---------------------|-------------------|--------------------|---------------------|-------------------|
| GQA2W024A050V-007-R | 9 - 36 | 5 | 24 | 120 |
| GQA2W010A120V-007-R | 9 - 36 | 12 | 10 | 120 |
| GQA2W008A150V-007-R | 9 - 36 | 15 | 8 | 120 |
| GQA2W005A240V-007-R | 9 - 36 | 24 | 5 | 120 |
| GQA2W004A280V-007-R | 9 - 36 | 28 | 4.28 | 120 |
| GQA24003A480V-007-R | 18 - 36 | 48 | 2.5 | 120 |

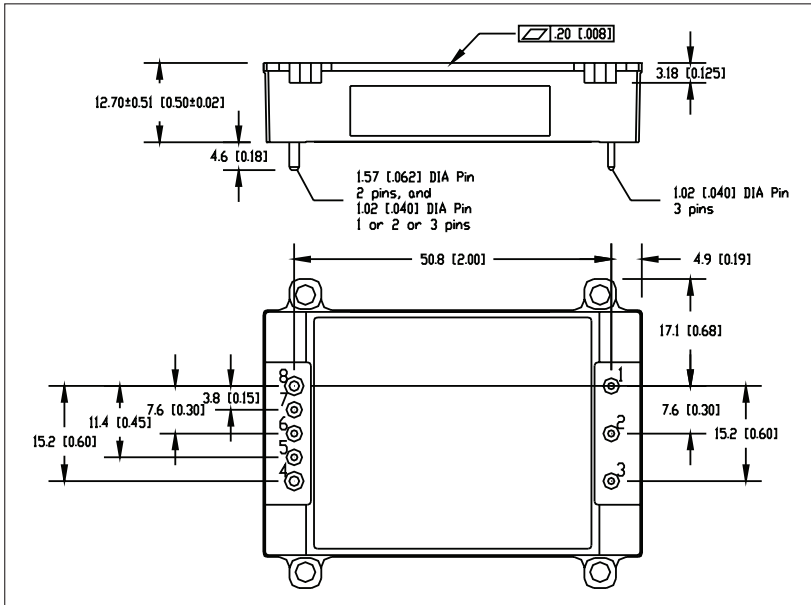
Flange Baseplate, Open Frame GQA120 Series



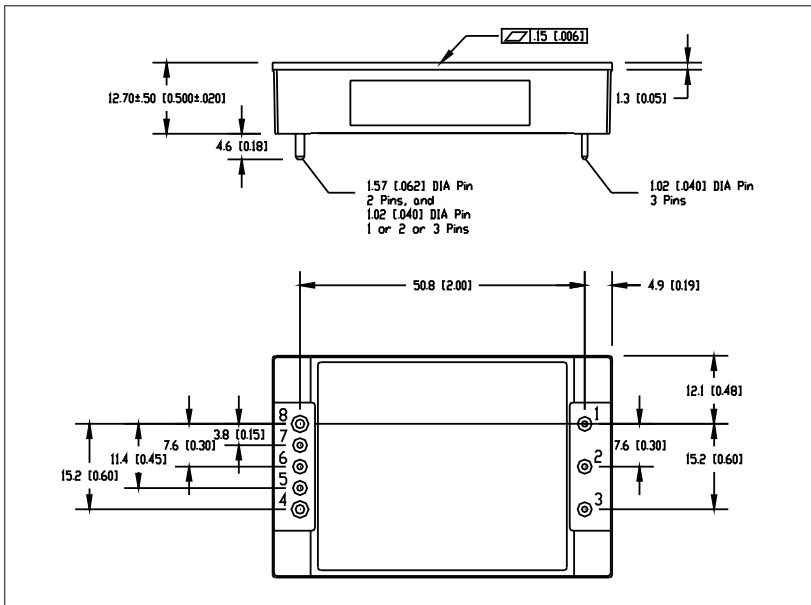
Non-Flange Baseplate, Open Frame GQA120 Series



With Flange, Potted GQA120 Series



No Flange, Potted GQA120 Series



Options

| Suffix | Description |
|--------|-------------|
|--------|-------------|

| | |
|--------|---|
| -007-R | Flanged Baseplate, Open Frame |
| -N07-R | Non-Flanged Baseplate, Open Frame |
| -0P7-R | Flanged Baseplate, Enclosed with Potting, 3kV Input to Output Isolation |
| -NP7-R | Non-Flanged Baseplate, Enclosed with Potting |

Standard Model

Notes: *Contact factory for other Voltages or option codes

Pin Assignment

| PIN | Function |
|-----|----------|
|-----|----------|

| | |
|---|--------------------------|
| 1 | Vin (+) |
| 2 | On / Off |
| 3 | Vin (-) |
| 4 | Vo (-) |
| 5 | Sense (-), select models |
| 6 | Trim |
| 7 | Sense (+), select models |
| 8 | Vo (+) |



TDK-Lambda France SAS

3 Avenue du Canada
Parc Technopolis
Bâtiment Sigma
91940 les Ulis
France
Tel: +33 1 60 12 71 65
Fax: +33 1 60 12 71 66
france@fr.tdk-lambda.com
www.fr.tdk-lambda.com



Italy Sales Office

Via dei Lavoratori 128/130
20092 Cinisello Balsamo (MI)
Italy
Tel: +39 02 61 29 38 63
Fax: +39 02 61 29 09 00
info.italia@it.tdk-lambda.com
www.it.tdk-lambda.com



Netherlands

info@nl.tdk-lambda.com
www.nl.tdk-lambda.com



TDK-Lambda Germany GmbH

Karl-Bold-Strasse 40
77855 Achem
Germany
Tel: +49 7841 666 0
Fax: +49 7841 5000
info.germany@de.tdk-lambda.com
www.de.tdk-lambda.com



Austria Sales Office

Aredstrasse 22
2544 Leobersdorf
Austria
Tel: +43 2256 655 84
Fax: +43 2256 645 12
info@at.tdk-lambda.com
www.de.tdk-lambda.com



Switzerland Sales Office

Bahnhofstrasse 50
8305 Dietlikon
Switzerland
Tel: +41 44 850 53 53
Fax: +41 44 850 53 50
info@ch.tdk-lambda.com
www.de.tdk-lambda.com



Nordic Sales Office

Haderslevvej 36B
DK-6000 Kolding
Denmark
Tel: +45 2911 9556
info@dk.tdk-lambda.com



TDK-Lambda UK Ltd.

Kingsley Avenue
Ilfracombe
Devon EX34 8ES
United Kingdom
Tel: +44 (0) 12 71 85 66 66
Fax: +44 (0) 12 71 86 48 94
powersolutions@uk.tdk-lambda.com
www.uk.tdk-lambda.com



TDK-Lambda Ltd.

Kibbutz
Givat Hashlosha 48800
Israel
Tel: +9 723 902 4333
Fax: +9 723 902 4777
info@tdk-lambda.co.il
www.tdk-lambda.co.il



C.I.S.

Commercial Support:

Tel: +7 (495) 665 2627

Technical Support:

Tel: +7 (812) 658 0463

info@tdk-lambda.ru

www.tdk-lambda.ru

Local Distribution

